

METALLIUM



TECHNISCHE SPECIFICATIES TECHNICAL SPECIFICATIONS TECHNISCHE DATEN



METALLIUM

ketting/warp/Kette	20,5 draden/threads/Fäden per cm 50% katoen/cotton/Baumwolle, Nm 34 50% polyester
inslag/weft/Schuss	18 draden/threads/Fäden per cm 50% katoen/cotton/Baumwolle, Nm 28 50% polyester
gewicht/substance	259 g/m ²
dikte/caliper/Dicke	ca. 0,32 mm
lengte/roll size/Länge	50 meter
breedte/width/Breite	108 cm 108 cm benutbare breedte/usable width/Nutzbreite



van Heek textiles

Een sterk weefsel met een eigentijdse look, ook geschikt voor zwaardere toepassingen. Door het vlakliggende en gladde oppervlak is het uitstekend te bedrukken in offset-, zeef- en foliedruk.

A strong weave with a contemporary look, also suitable for heavier applications. Its smooth surface and flatness makes it excellent for use with offset, screen and foil printing.

Ein starkes Gewebe in modernem Look, das sich auch für anspruchsvollere Anwendungen eignet. Die glatte Oberfläche und ideale Planlage gewährleisten gute Ergebnisse für den Offset-, Sieb- und Foliendruck.



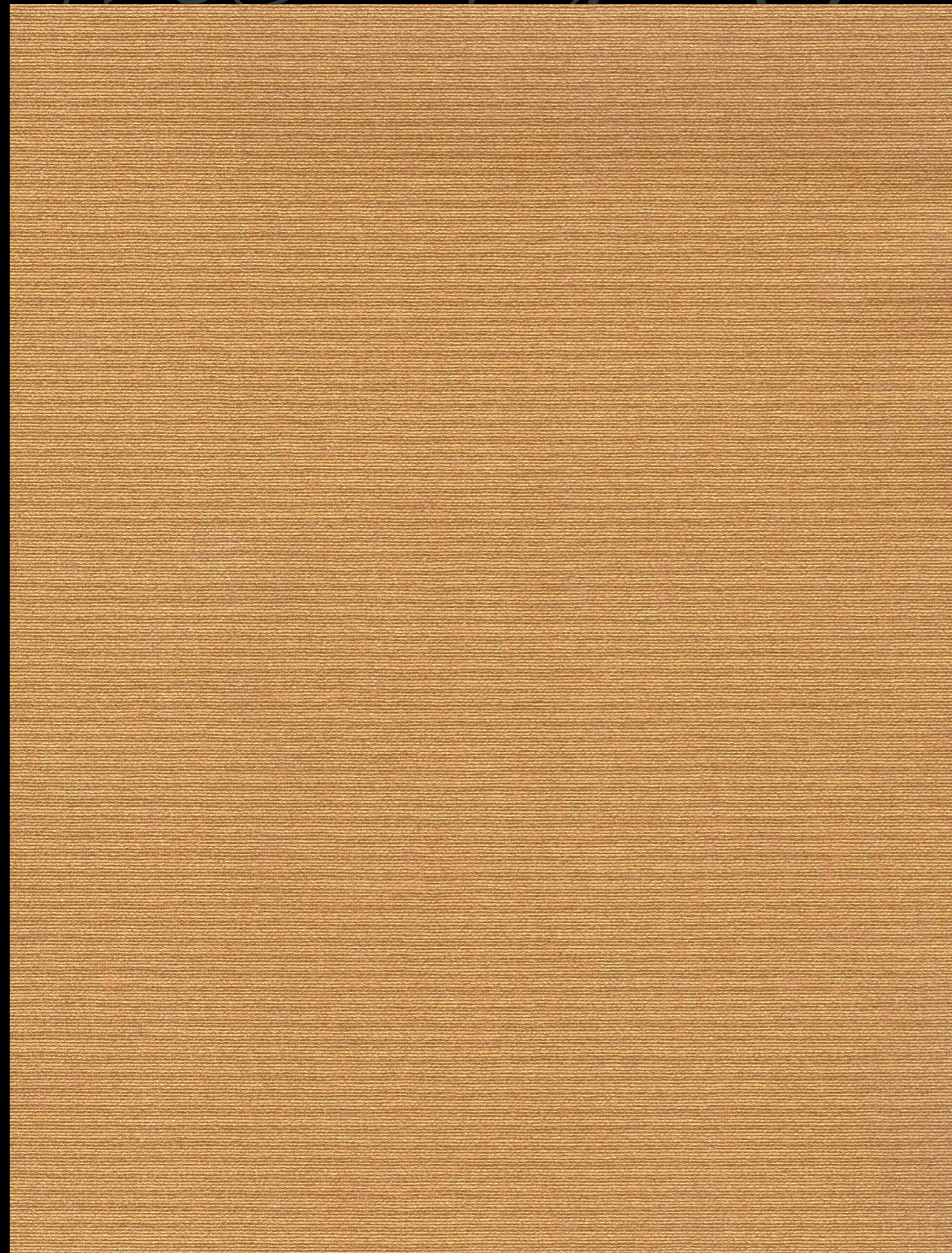
van Heek textiles

L. van Heek Textiles
P.O. Box 1
7580 AA Losser-Holland
Gronausestraat 309
Telephone +31(0)53 5371111
Fax +31(0)53 5371140
info@vanheektextiles.com
www.vanheektextiles.com



METALLIUM

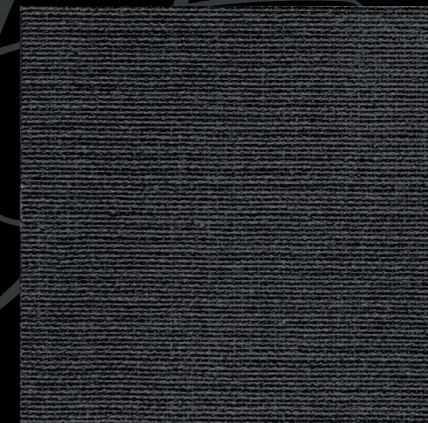
METALLIUM



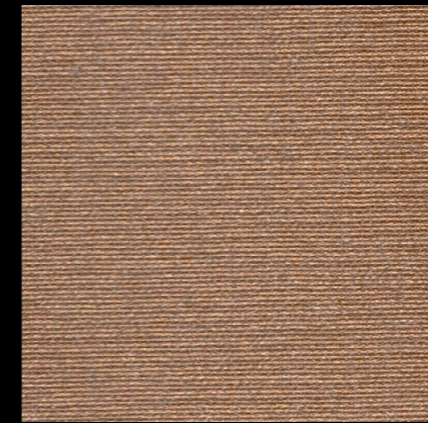
13303



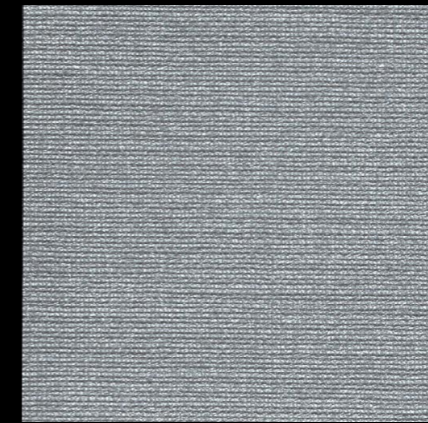
13321



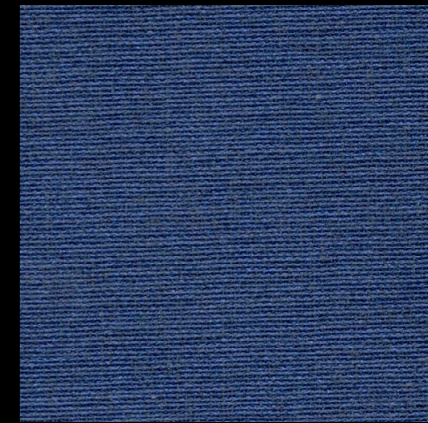
13305



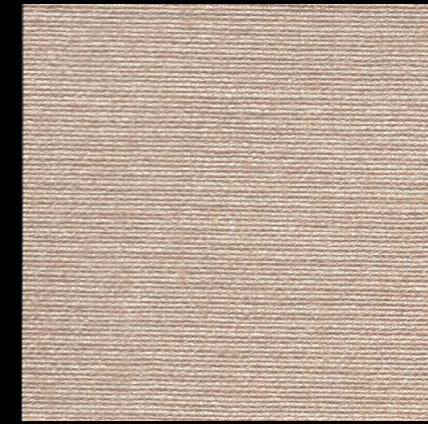
13320



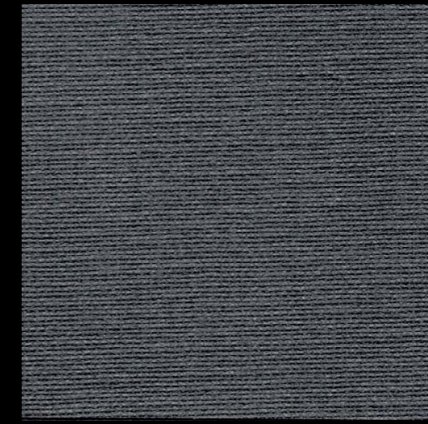
13302



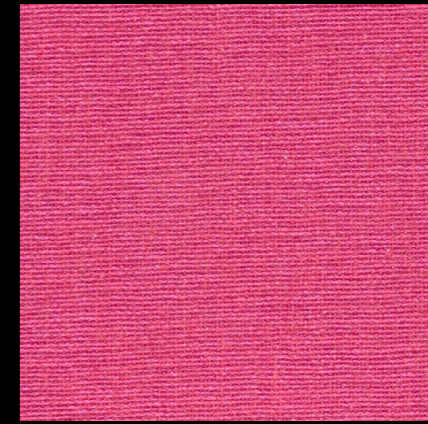
13333



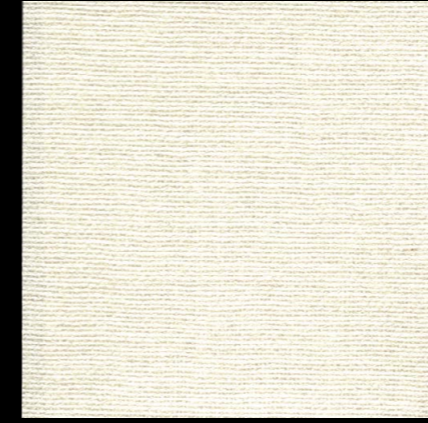
13330



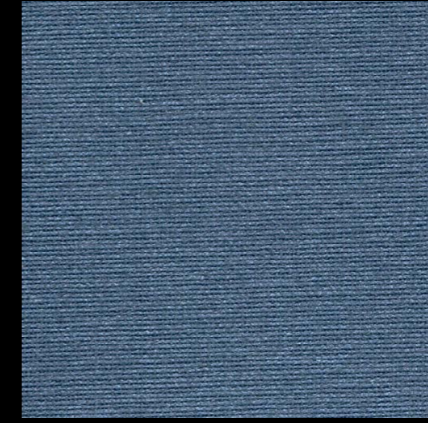
13304



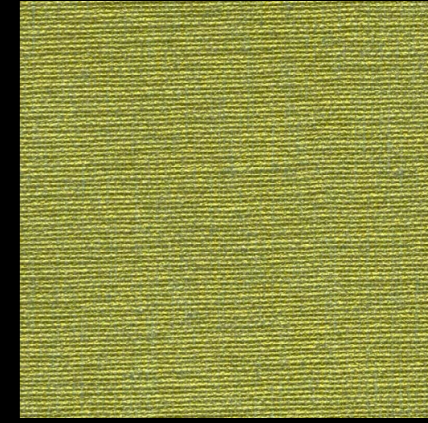
13331



13332



13300



13319

13301

Technische specificaties: zie achterzijde / Technical specifications: see back of card / Technische Daten: siehe Rückseite