

REGINA

TECHNISCHE SPECIFICATIES

TECHNICAL SPECIFICATIONS
TECHNISCHE DATEN



REGINA

ketting/warp/Kette	22,7 draden/threads/Fäden per cm 100% celvezel/rayon/Zellwolle, Nm 50
inslag/weft/Schuss	8,5 draden/threads/Fäden per cm 100% celvezel/rayon/Zellwolle, Nm 10
gewicht/substance	180 g/m ²
dikte/caliper/Dicke	ca. 0,33 mm
cachering/backing paper	ca. 30 g/m ² zuurvrij papier/acid free paper/säurefreies Papier
lengte/roll size/Länge	100 meter
breedte/width/Breite	110 cm 108 cm benutbare breedte/usable width/Nutzbreite



van Heek textiles

Het dikkere inslaggaren geeft extra reliëf aan Regina. Uw product krijgt daardoor een extra stijlvolle uitstraling die bijna koninklijk mag worden genoemd.

The thicker weft threads give Regina its extra raised structure. This gives an extra-stylish finish to enhance the look of your product.

Der dickere Schussfaden verleiht Regina eine außergewöhnliche Haptik. Dieser Touch gibt dem Endprodukt eine sehr stilvolle Ausstrahlung.



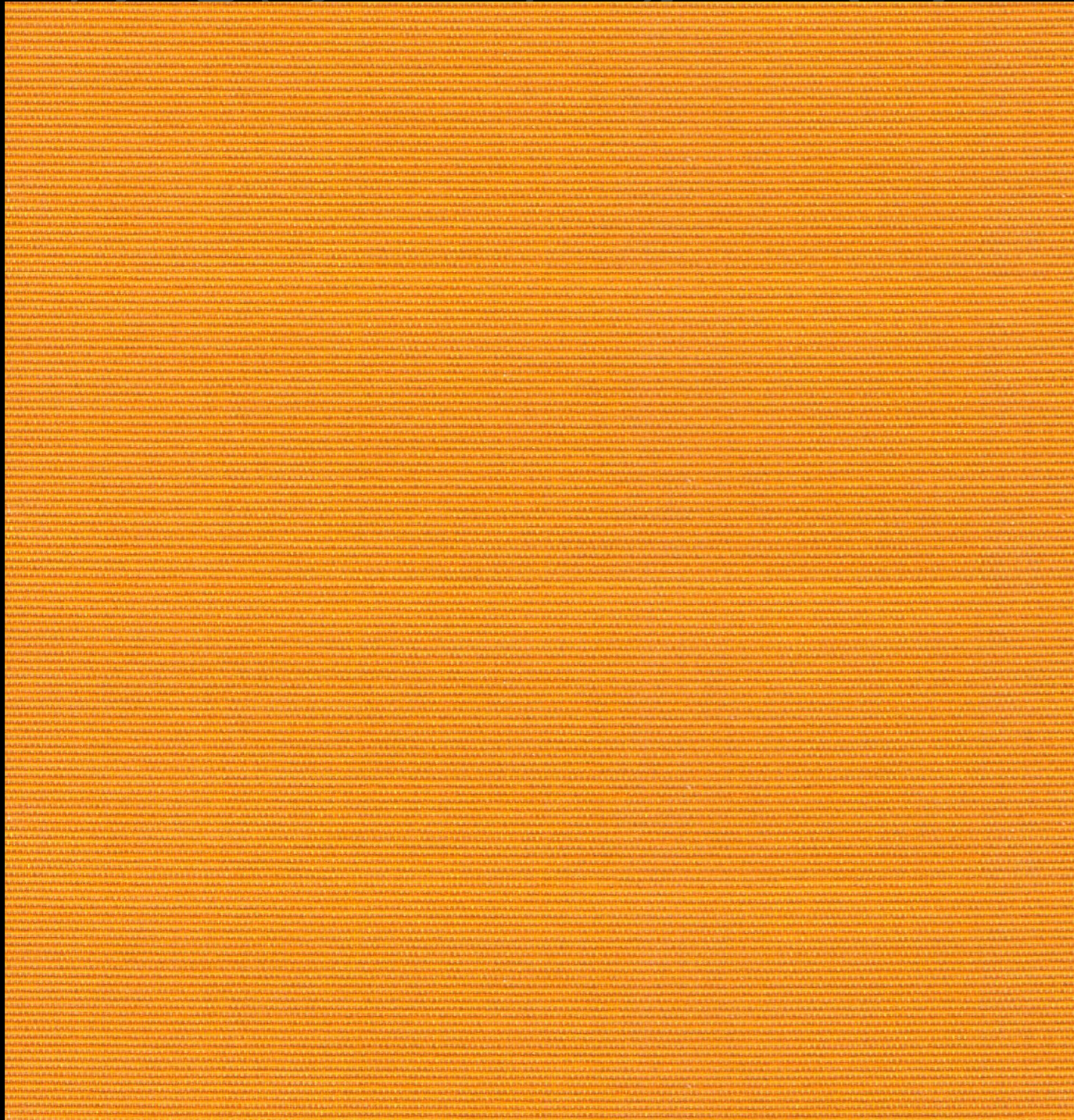
van Heek textiles

L. van Heek Textiles
P.O. Box 1
7580 AA Losser-Holland
Gronausestraat 309
Telephone +31(0)53 5371111
Fax +31(0)53 5371140
info@vanheektextiles.com
www.vanheektextiles.com

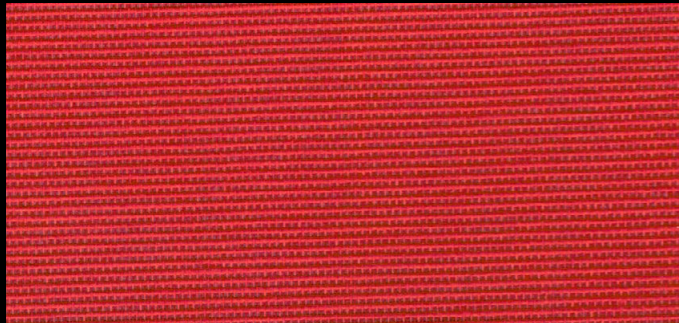


REGINA

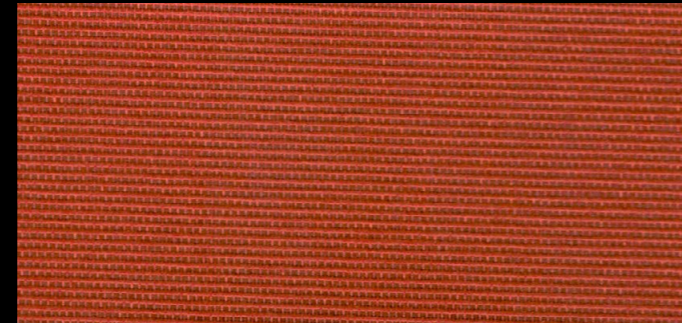
REGINA



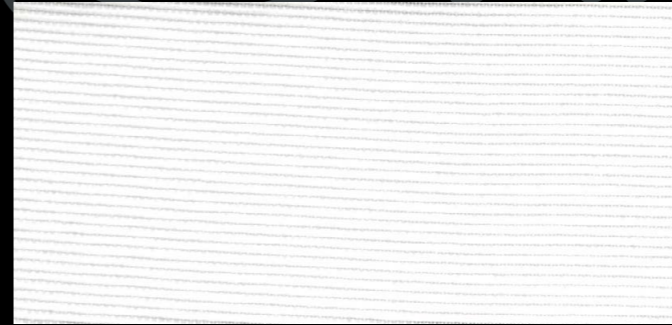
9000 Technische specificaties: zie achterzijde / Technical specifications: see back of card / Technische Daten: siehe Rückseite



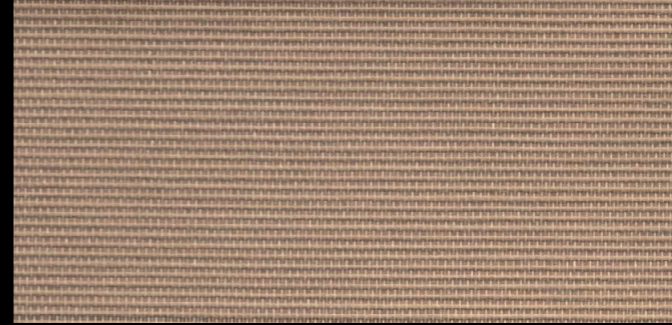
9004



9006



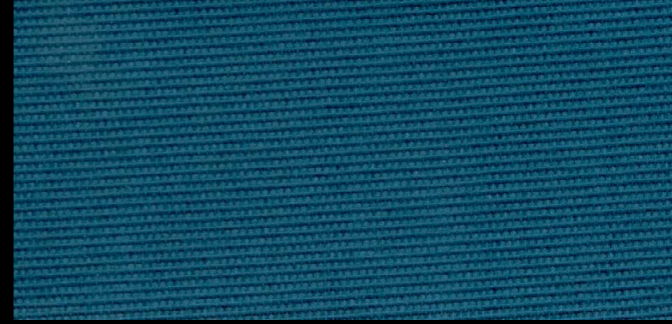
9025



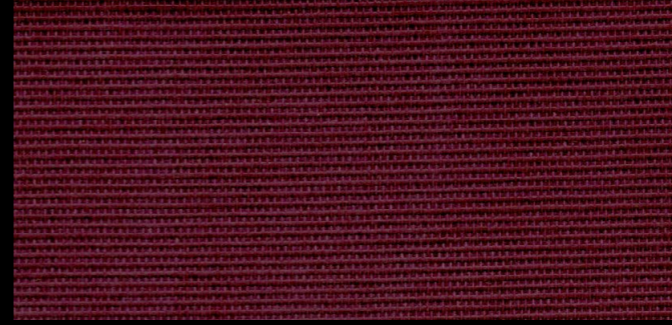
9026



9009



9007



9002



9010



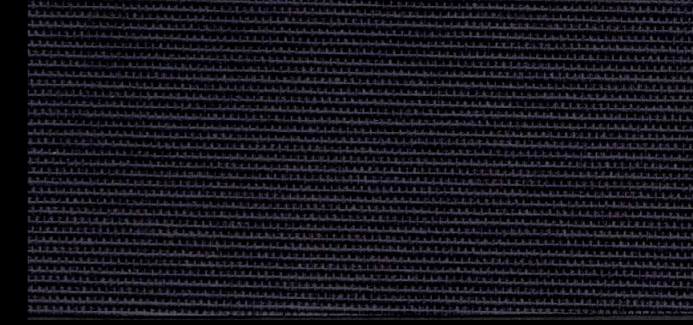
9016



9003



9005



9017