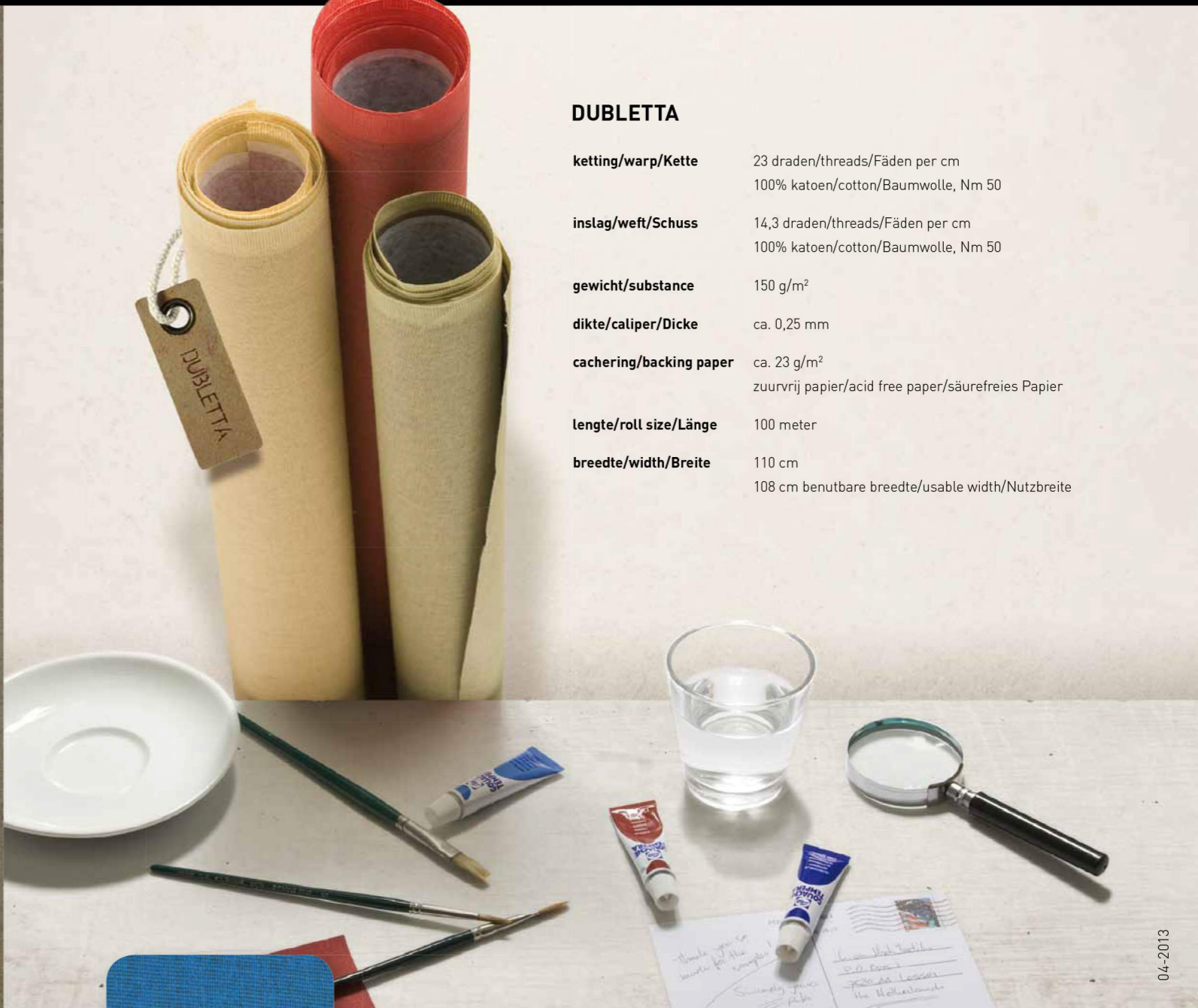


# DUBLETTA



## TECHNISCHE SPECIFICATIES TECHNICAL SPECIFICATIONS TECHNISCHE DATEN



### DUBLETTA

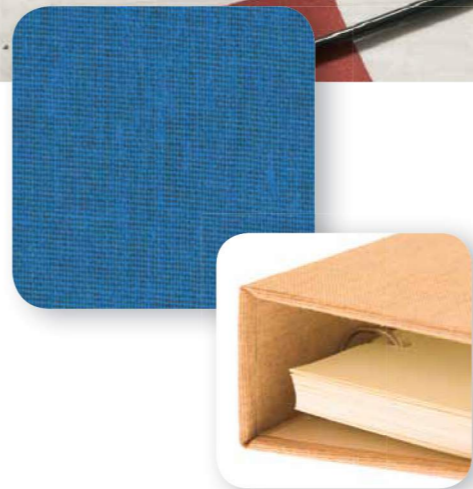
<b>ketting/warp/Kette</b>	23 draden/threads/Fäden per cm 100% katoen/cotton/Baumwolle, Nm 50
<b>inslag/weft/Schuss</b>	14,3 draden/threads/Fäden per cm 100% katoen/cotton/Baumwolle, Nm 50
<b>gewicht/substance</b>	150 g/m <sup>2</sup>
<b>dikte/caliper/Dicke</b>	ca. 0,25 mm
<b>cachering/backing paper</b>	ca. 23 g/m <sup>2</sup> zuurvrij papier/acid free paper/säurefreies Papier
<b>lengte/roll size/Länge</b>	100 meter
<b>breedte/width/Breite</b>	110 cm 108 cm benutbare breedte/usable width/Nutzbreite

 **van Heek textiles**

Dubletta is een licht katoenen weefsel met een mat oppervlak. De specifieke structuur, in combinatie met het uitgekende kleurenspectrum, zorgt voor een chic effect.

Dubletta is a light, cotton weave with a matte surface. The specific structure, combined with the sophisticated colour spectrum, ensures a stylish result.

Dubletta ist ein leichtes Baumwollgewebe mit matter Oberfläche. Die spezifische Struktur sorgt in Kombination mit dem Farbspektrum für ein geschmackvolles Ergebnis.

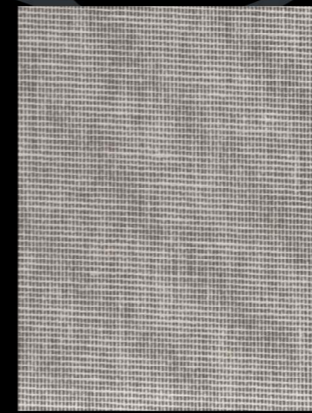
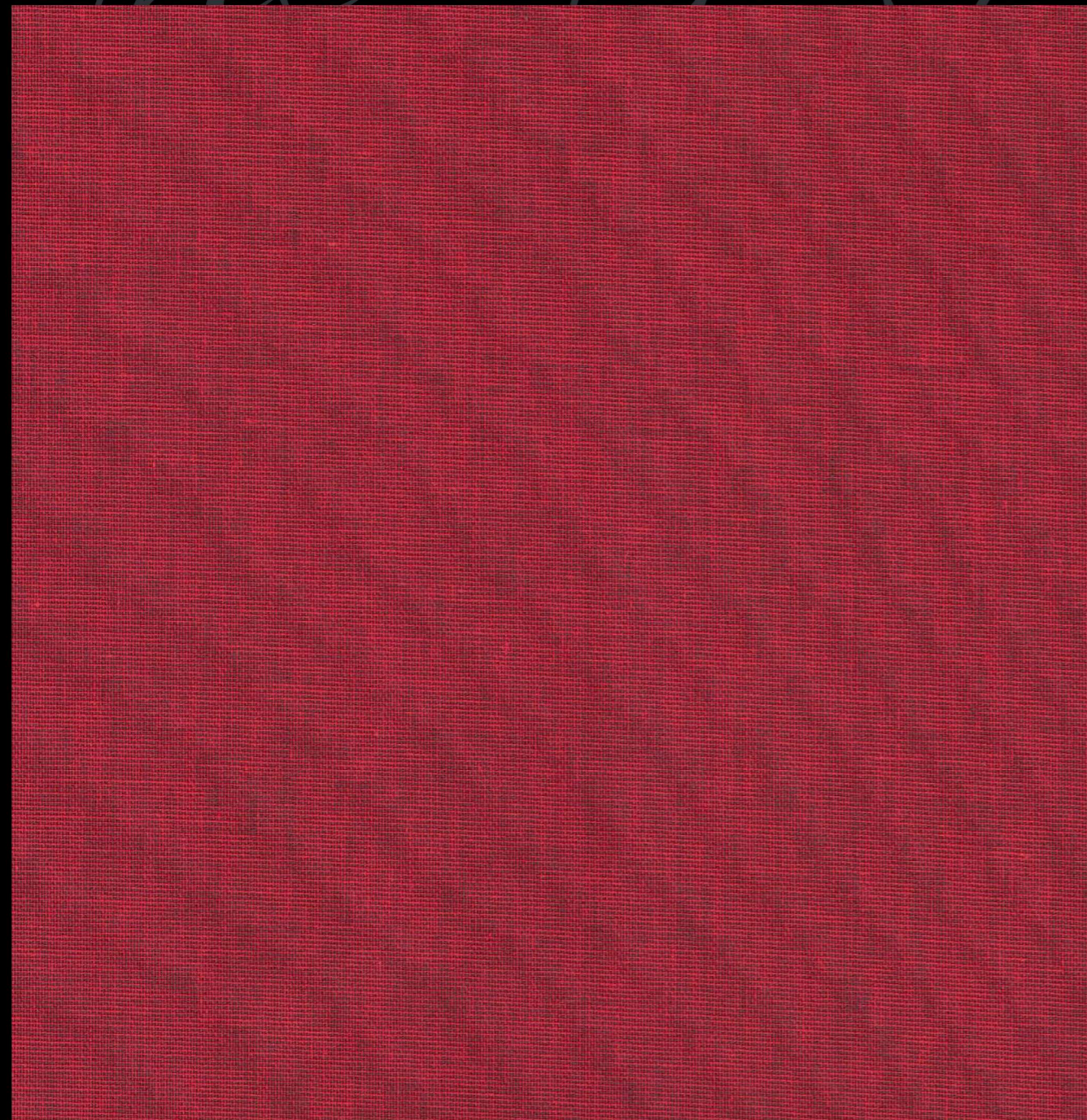


 **van Heek textiles**

L. van Heek Textiles  
P.O. Box 1  
7580 AA Losser-Holland  
Gronausestraat 309  
Telephone +31(0)53 5371111  
Fax +31(0)53 5371140  
info@vanheektextiles.com  
[www.vanheektextiles.com](http://www.vanheektextiles.com)

# DUBLETTA

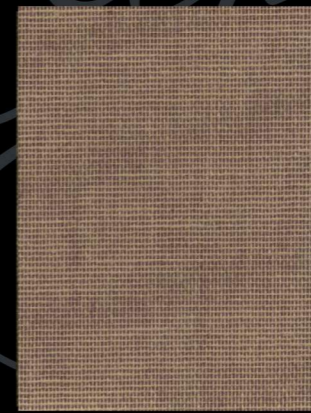
# DUBLETTA



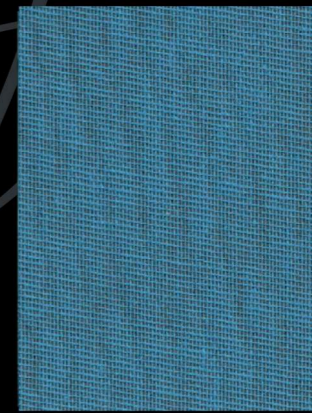
3255



3261



3266



3251



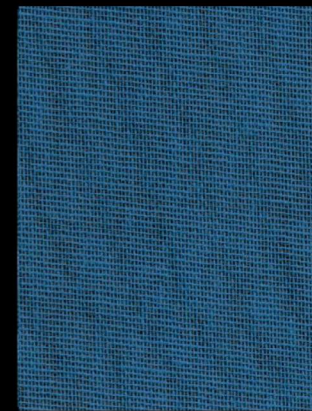
3254



3265



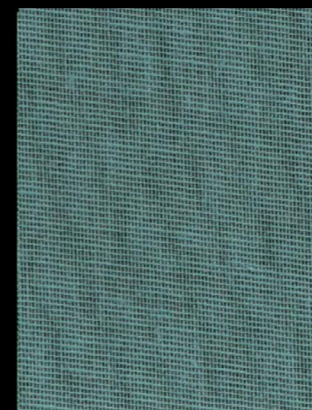
3256



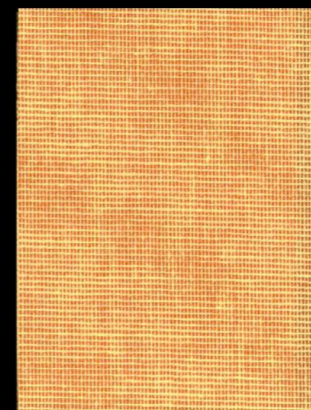
3252



3269

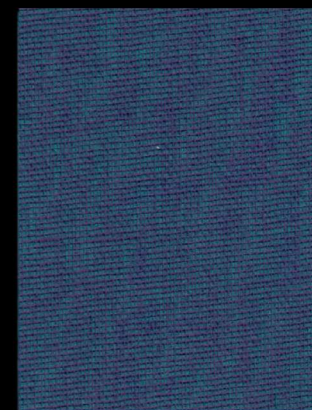


3267



3272

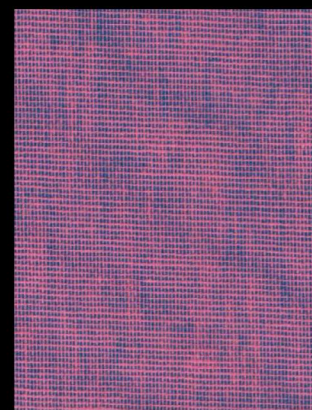
NEW



3278

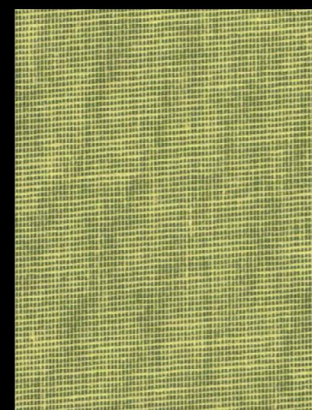
NEW

Technische specificaties: zie achterzijde / Technical specifications: see back of card / Technische Daten: siehe Rückseite



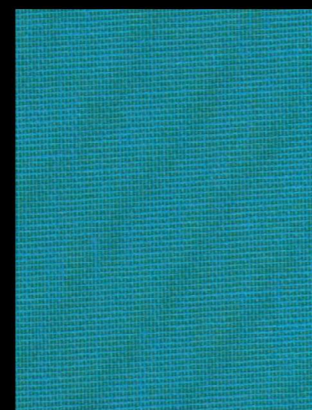
3275

NEW



3271

NEW



3274

NEW



3264



3263



3257



3253