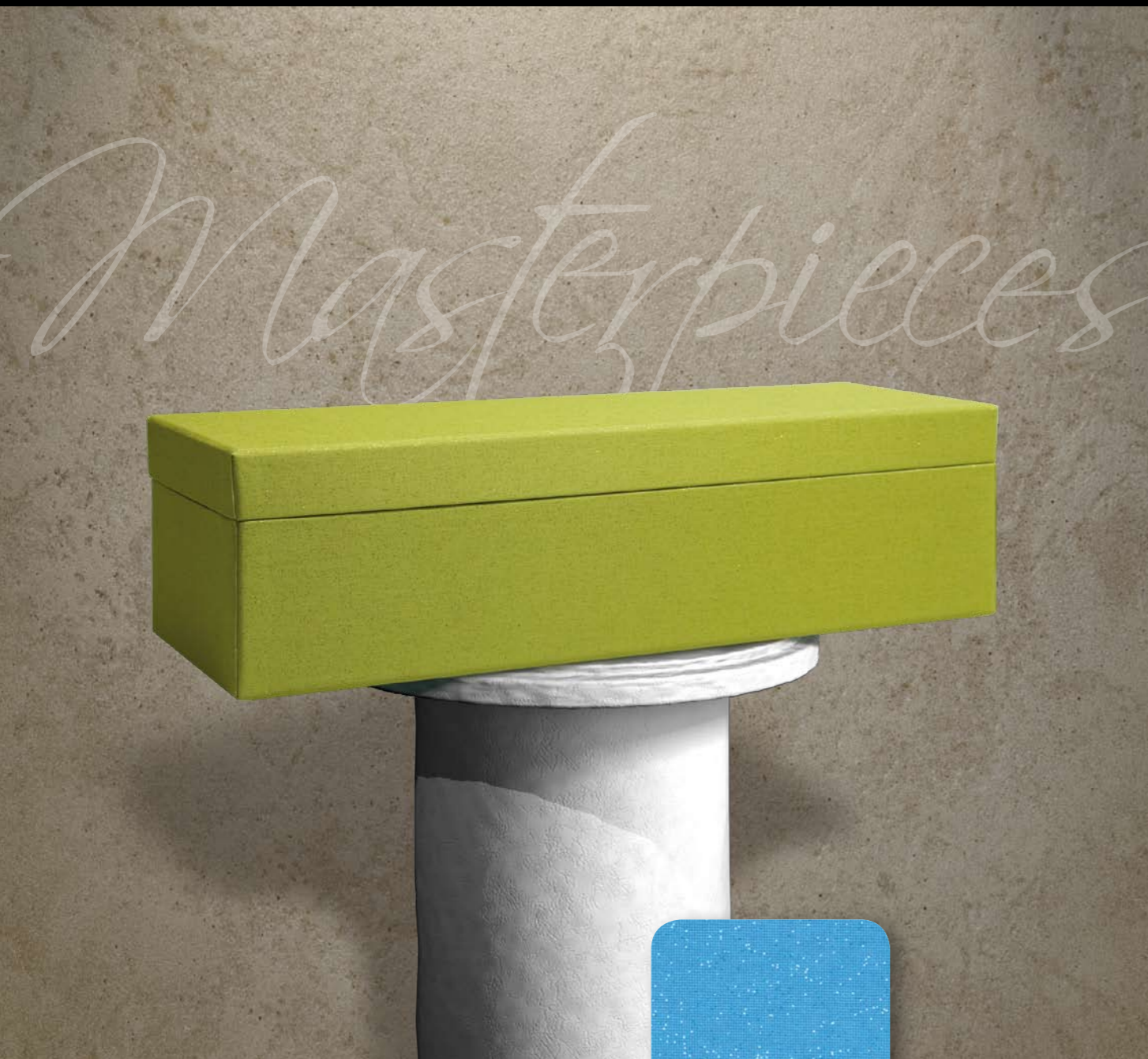


MAGIC

TECHNISCHE SPECIFICATIES

TECHNICAL SPECIFICATIONS
TECHNISCHE DATEN



MAGIC

ketting/warp/Kette	23,5 draden/threads/Fäden per cm 100% celvezel/rayon/Zellwolle, Nm 50
inslag/weft/Schuss	21,7 draden/threads/Fäden per cm 100% celvezel/rayon/Zellwolle, Nm 40
gewicht/substance	180 g/m ²
dikte/caliper/Dicke	ca. 0,33 mm
cachering/backing paper	ca. 30 g/m ² zuurvrij papier/acid free paper/säurefreies Papier
lengte/roll size/Länge	100 meter
breedte/width/Breite	135 cm 132 cm benutbare breedte/usable width/Nutzbreite



van Heek textiles

Een natuurfinish dat door het aanbrengen van glitters een betoverend effect heeft. Een uitgebreid scala aan kleuren zal u aanzetten tot creativiteit.

A natural finish combined with glitter creates a magical effect. The extensive colour variety stimulates your own creativity.

Ein Naturfinish, dem die aufgetragenen Glittereffekte eine zauberhafte Ausstrahlung verleihen. 17 Farben stehen zur Auswahl und sorgen für Glanz & Glamour Ihrer Produkte.



van Heek textiles

L. van Heek Textiles
P.O. Box 1
7580 AA Losser-Holland
Gronausestraat 309
Telephone +31(0)53 5371111
Fax +31(0)53 5371140
info@vanheektextiles.com
www.vanheektextiles.com

MAGIC



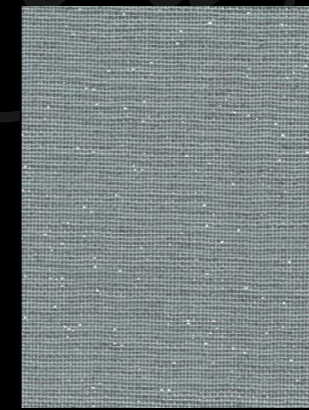
42001

Technische specificaties: zie achterzijde / Technical specifications: see back of card / Technische Daten: siehe Rückseite

MAGIC



42016



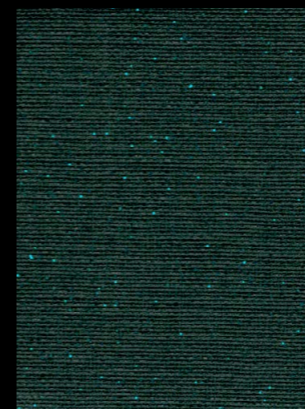
42015



42009



42002



42006



42013



42012



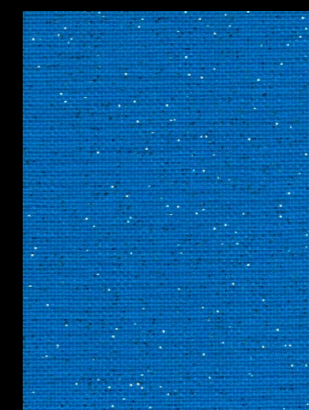
42007



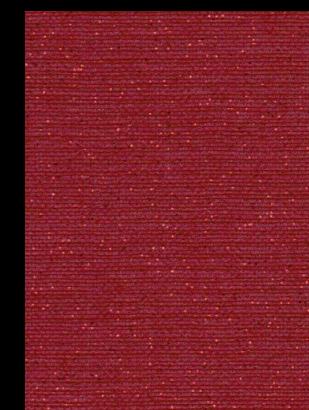
42017



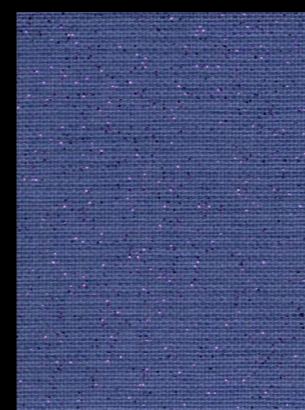
42020



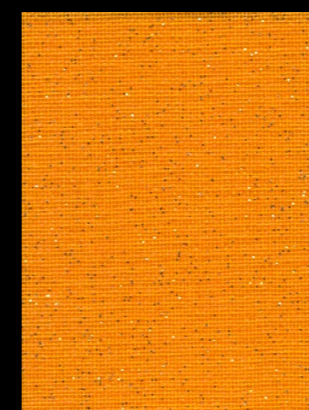
42004



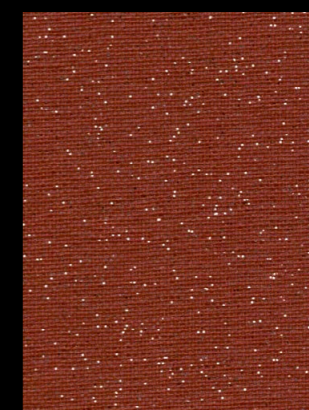
42005



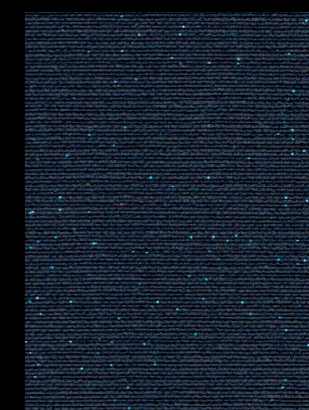
42011



42014



42008



42003