

TECHNISCHE SPECIFICATIES

TECHNICAL SPECIFICATIONS
TECHNISCHE DATEN



SENATOR

ketting/warp/Kette	15,8 draden/threads/Fäden per cm 65% katoen/cotton/Baumwolle/35%pes, Nm 34/1
inslag/weft/Schuss	15,4 draden/threads/Fäden per cm 100% katoen/cotton/Baumwolle, Nm 17/1
gewicht/substance	ca. 222 g/m ²
dikte/caliper/Dicke	ca. 0,35 mm
cachering/backing paper	no
lengte/roll size/Länge	100 meter standa(a)rd
breedte/width/Breite	108 cm benutbare breedte/usable width/Nutzbreite



05-2016

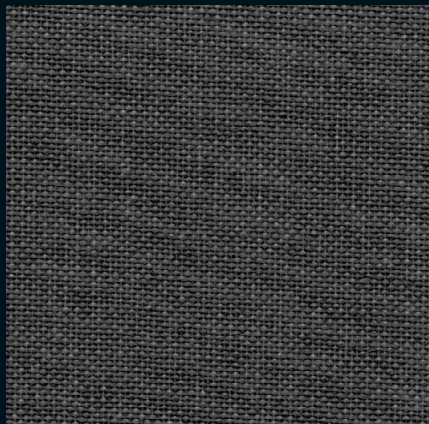


van Heek textiles

L. van Heek Textiles
P.O. Box 1
7580 AA Losser-Holland
Gronausestraat 309
Telephone +31(0)53 5371111
Fax +31(0)53 5371140
info@vanheektextiles.com
www.vanheektextiles.com

SENATOR

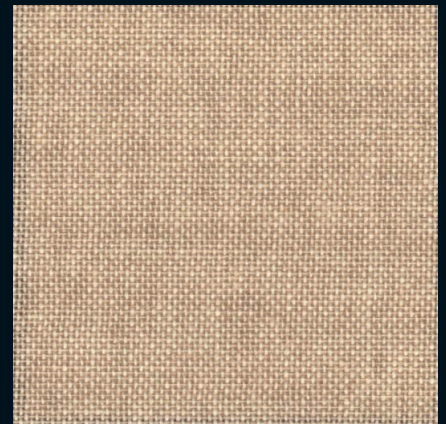
Trend Collection 2017-2018



74001



74002



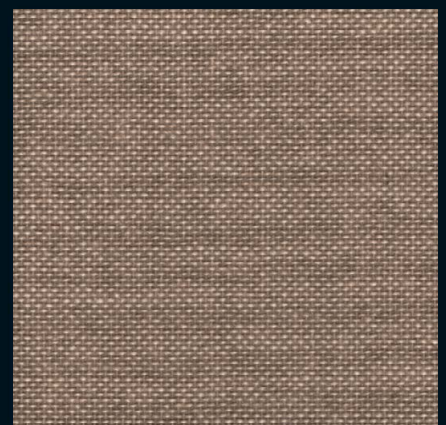
74000



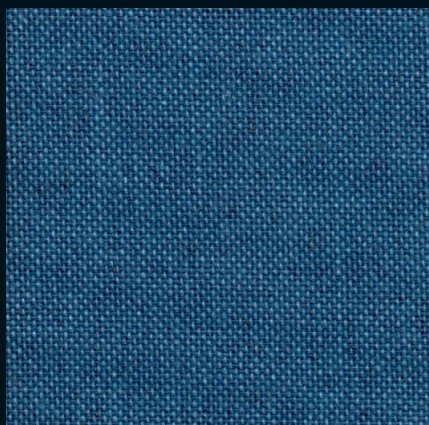
74004



74003



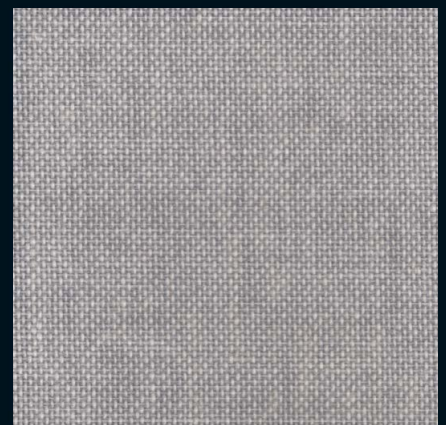
74005



74006



74008



74007



van Heek textiles

Technische specificaties: zie achterzijde / Technical specifications: see back of card / Technische Daten: siehe Rückseite